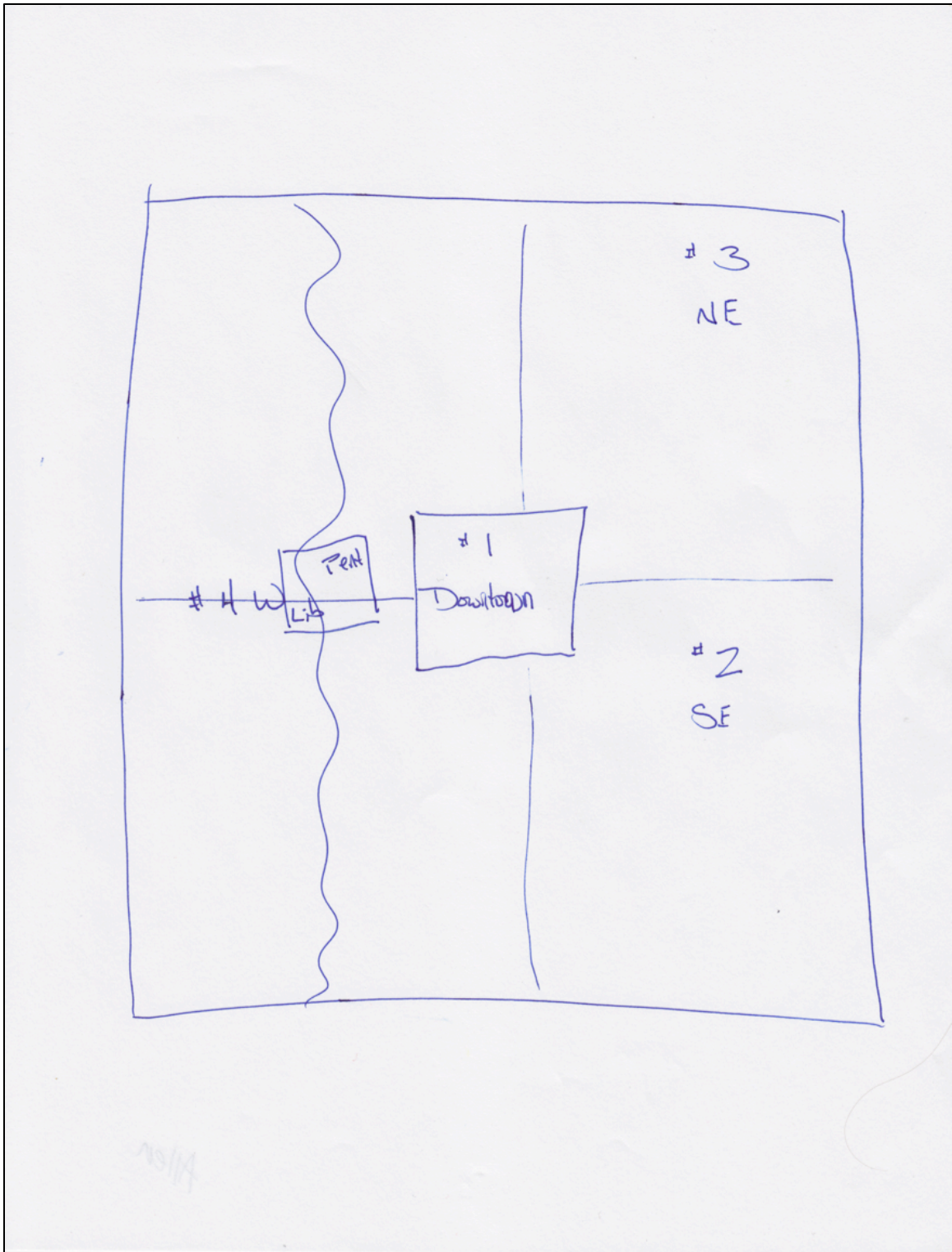


Mental Maps

Iowa City, Iowa 2012

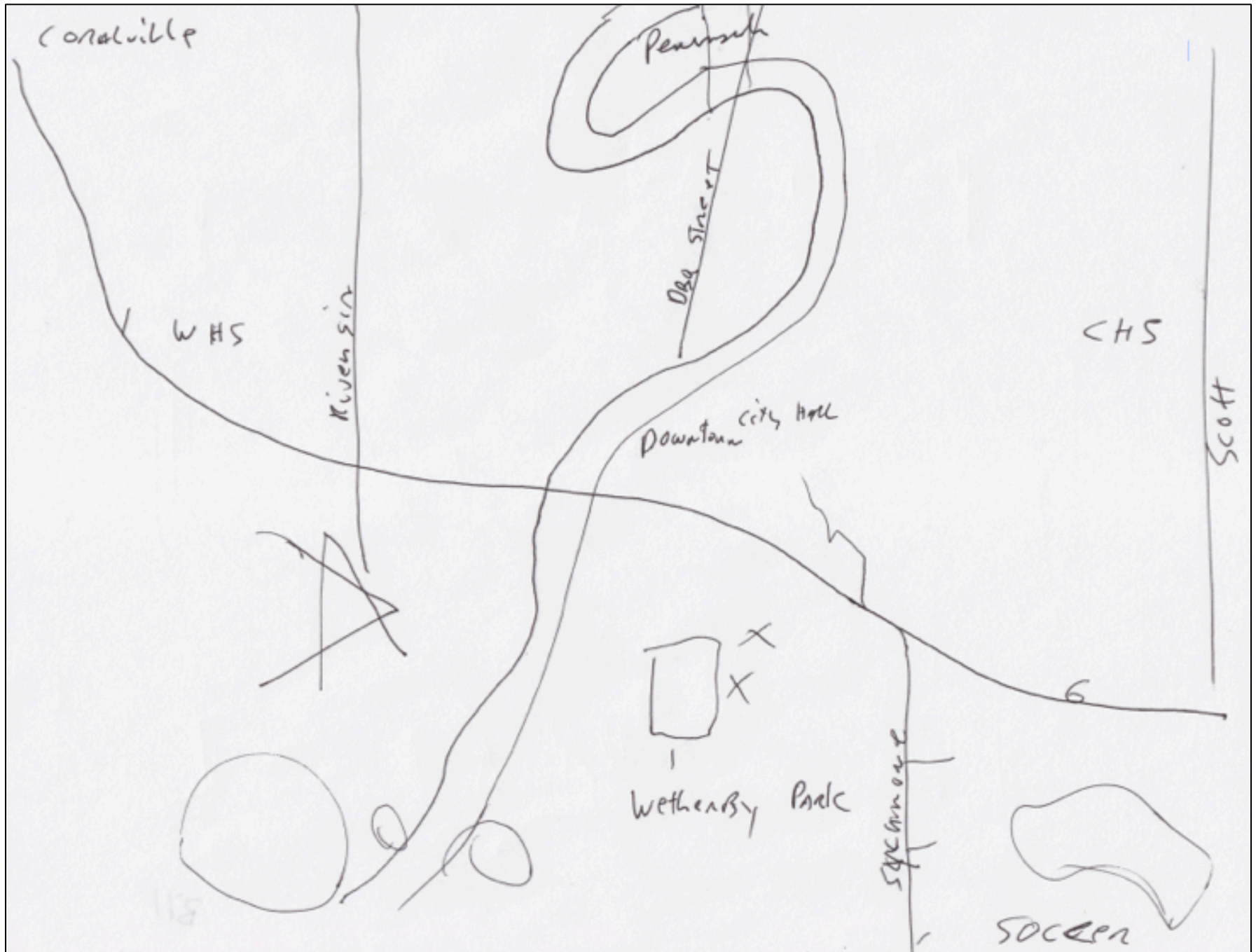
© Robert E. Gutsche Jr.

Public Officials



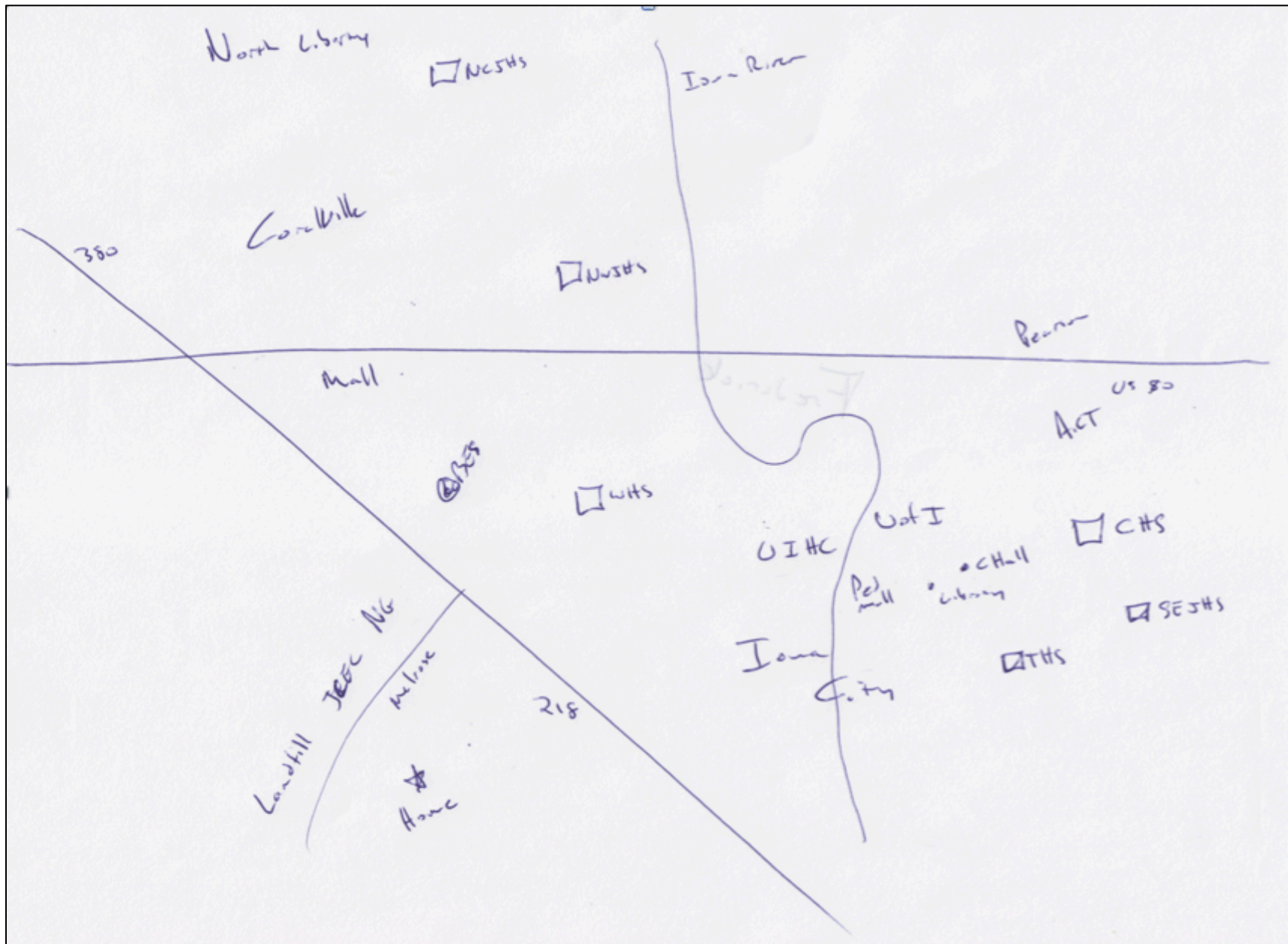
Allen's Map

Allen is a white police officer who has been in the Iowa City area since the early 1990s. His map of Iowa City is focused on its policing; therefore, he breaks it into four sections that match policing quadrants. Allen says that he does not have connections to the community since he lives in rural Iowa, several miles outside of the city.



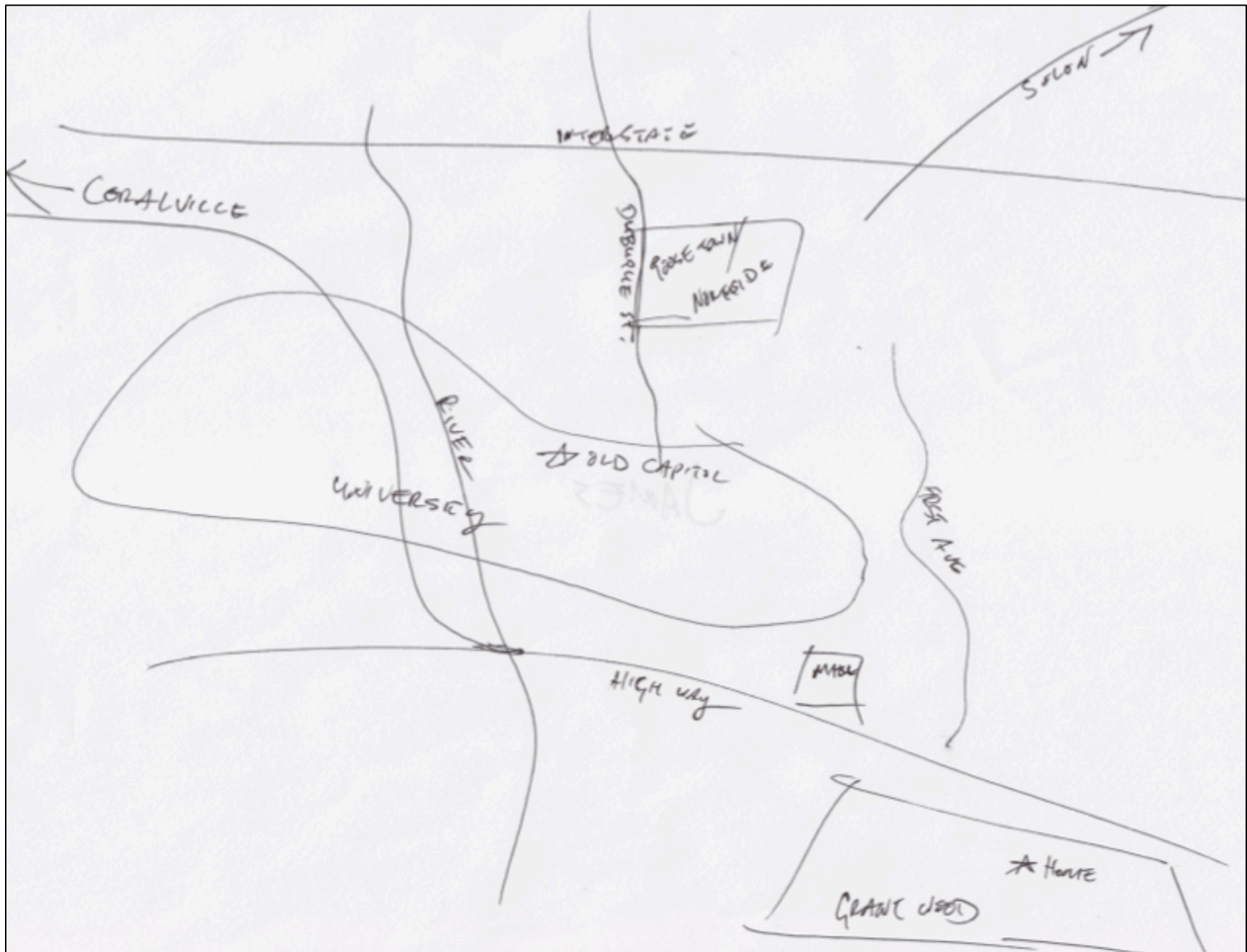
Bill's Map

Bill is a white male who has been a city housing official in Iowa City since 2003 and who moved to Iowa City in 2006. Bill sees his city as a map of housing and city services, even though he lives in the “Southeast Side.” In his map, he notes a park, airport (one of the few participants to do so), and a soccer complex with its connecting riding trails.



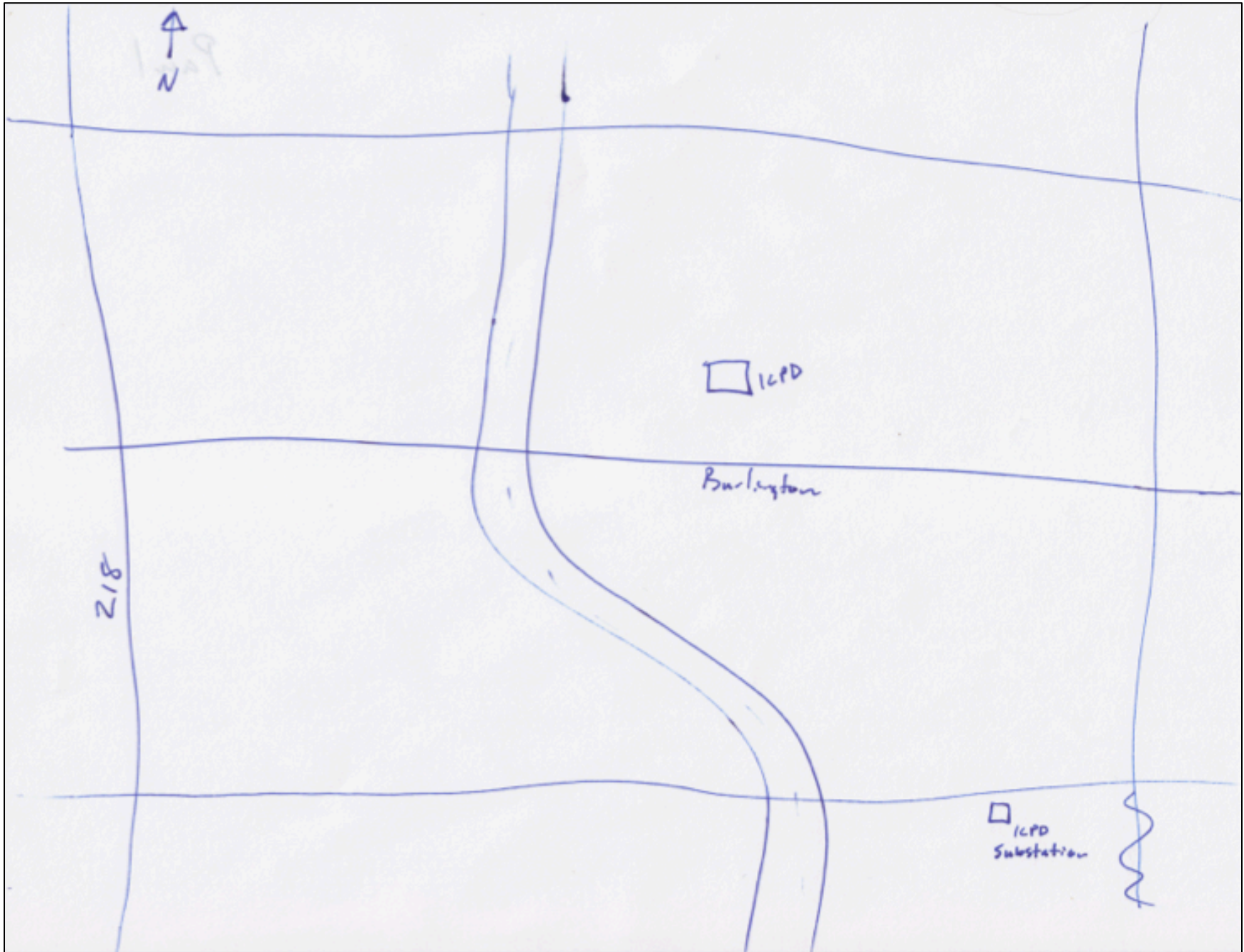
Fred's Map

Fred is a white school official who arrived in Iowa City in 2010. He interprets the city based upon the location of elementary schools. He also lists the city hall and library. He does not place other major roads on his map, such as Highway 1/6 on the South Side, but includes the streets to his house and marks the nearby landfill and the shopping mall.



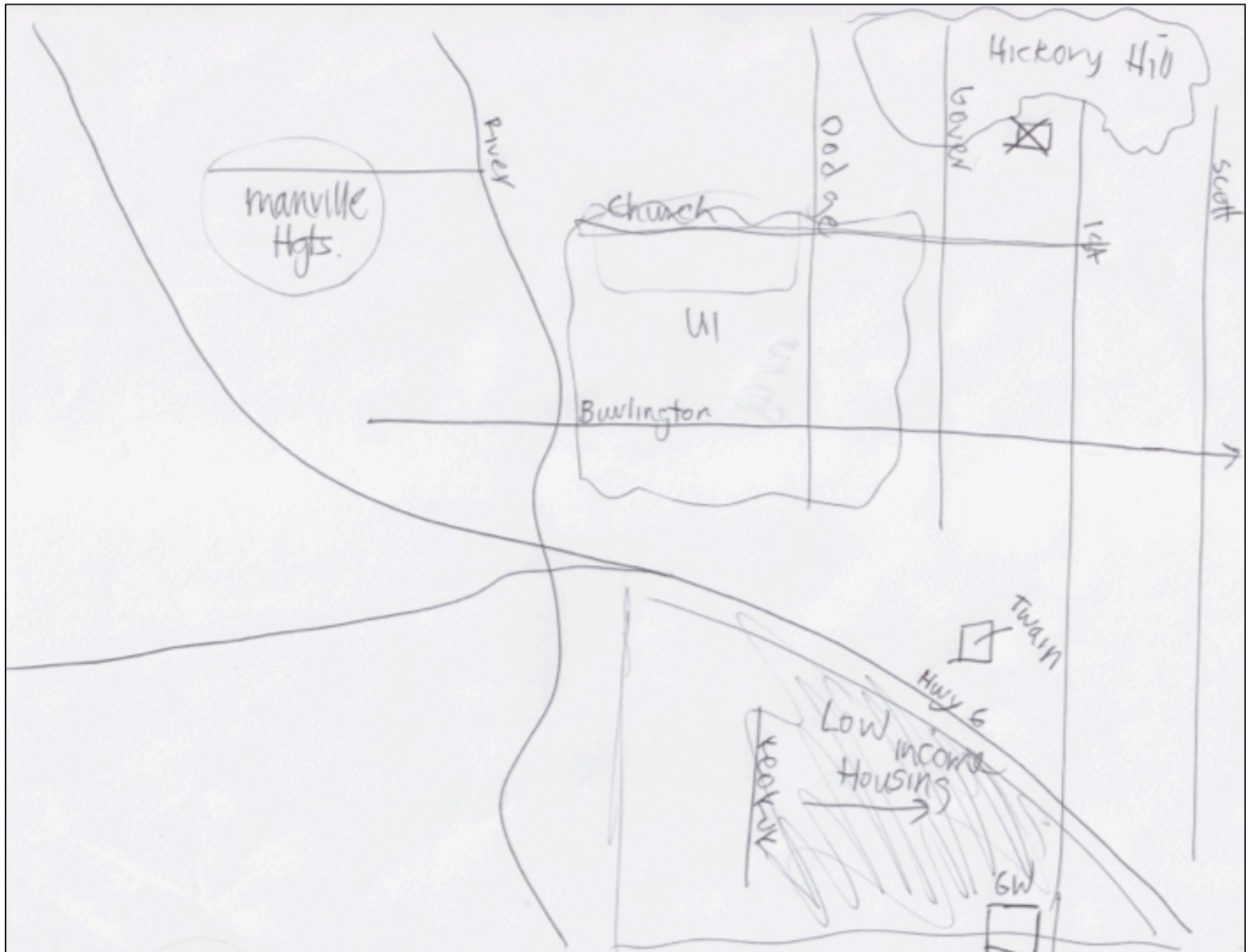
James' Map

James is a white man who has lived in Iowa City since the early 1990s. He was a student in Iowa City and works in city funded media production in and around the city. James is also a member of a neighborhood association south of Highway 6. He draws the university as a bubble, because he sees it as its own community that does not support the rest of the city, though it is a major employer. He marks his home, several other neighborhoods, and routes to get to other cities.



Paul's Map

Paul is a white man who has worked as a police officer in Iowa City since 2001. Though he does not live in Iowa City, he said he considers it his “community.” His map includes the Iowa River that he says divides the community both geographically and culturally. Paul says he sees the city as a place he patrols and includes both police stations and major roadways. He says shopping areas, schools, and other places are not on his map because they are “insignificant” to his role as a police officer.



Susie's Map

Susie is a white county worker who is often quoted in news stories about the Southeast Side. Susie drew her map with several neighborhoods, including one on the Northwest Side, one near her home on the Northeast Side, and one in which she works on the Southeast Side. She identifies the Southeast Side neighborhood as low-income and also includes specific roads, as well as the two elementary schools there.